

COBRA[®] PLUS

Unmatched Flexibility | Extremely Efficient | Superior Functionality



Semi-automatic stretch wrapping machine

COBRA[®] PLUS

Flexible, efficient and functional pallet wrapping solution

Unmatched Flexibility

Thanks to the rotating arm technology, the pallet load does not move during the stretch wrapping process. Therefore, the Cobra Plus is ideal for wrapping loads that are unstable, light, very heavy or odd-shaped – whatever the product type. The Cobra Plus comes standard with an independent floor stand, but can also be mounted to a column or wall. This innovative design also comes standard with an adjustable wrapping arm that can easily be modified to accommodate larger loads at no additional cost and provides the versatility to adapt to future needs.

Extremely Efficient

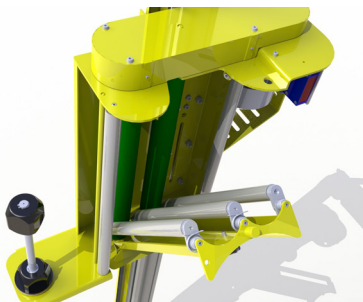
The motorized power pre-stretch system with adjustable film tension control guarantees optimal film usage. Also, by providing variable film tension control throughout the wrap cycle, superior load containment can be achieved while eliminating film breaks and product damage. The patented film carriage ensures consistent performance and minimal film consumption.

Superior Functionality

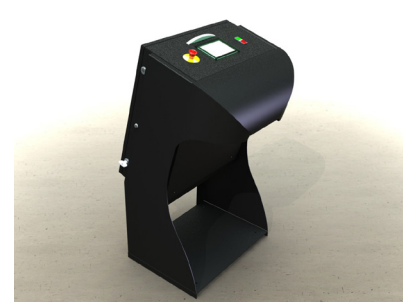
Four individual wrap programs can be stored using the touch screen HMI for simple operation of the machine. The programs include eight functions which can be adjusted to meet the demands of the most challenging applications. The tilted carriage design wraps down to within 2 3/4" from the floor, wrapping loads securely to the pallet.



The rotating arm can be easily adjusted to achieve a wrapping diagonal of 78" or 87"; offering extreme versatility at no additional cost.



The power pre-stretch carriage offers optimal load containment and minimal film usage. It also allows for easy film threading.



Easy to use for simple operation and maximum functionality. Adjustments for the number of wraps, wrap pattern, film tension, overlap, overwrap, and up/down speed are standard.

Dimensions		Technical Details		Options
Overall Height	118" (standard) 132" or 146" (optional)	Rotation Speed	Up to 12 RPM	Height Extension Upgrades Column Mount Kit Mechanical Roping Device
Max. Pallet Height	88" (standard) 102" or 116" (optional)	Capacity	Up to 35 pallets/hr	
Maximum Pallet Diagonal	71" or 86"	Weight	1,400 lbs	
Equivalent Pallet Dimension	50"x50" or 61"x61"	Control	PLC and touchscreen HMI	
		Film Width	20"	
		Max. film dia.	10"	
		Pre-stretch Level	Up to 260%	
		Standard Mounting	Floor Stand	