

# TSM-3000 R



## Optimize Performance

For maximum flexibility, highest productivity and performance

## Higher Flexibility

Low height and adjustable speed of bayonet and telescopic strap chute

## High Speed Productivity

Automatic strap feed and take-up with smart dispenser

## Low Cost Ownership

Robust machine design with low maintenance to minimize costs

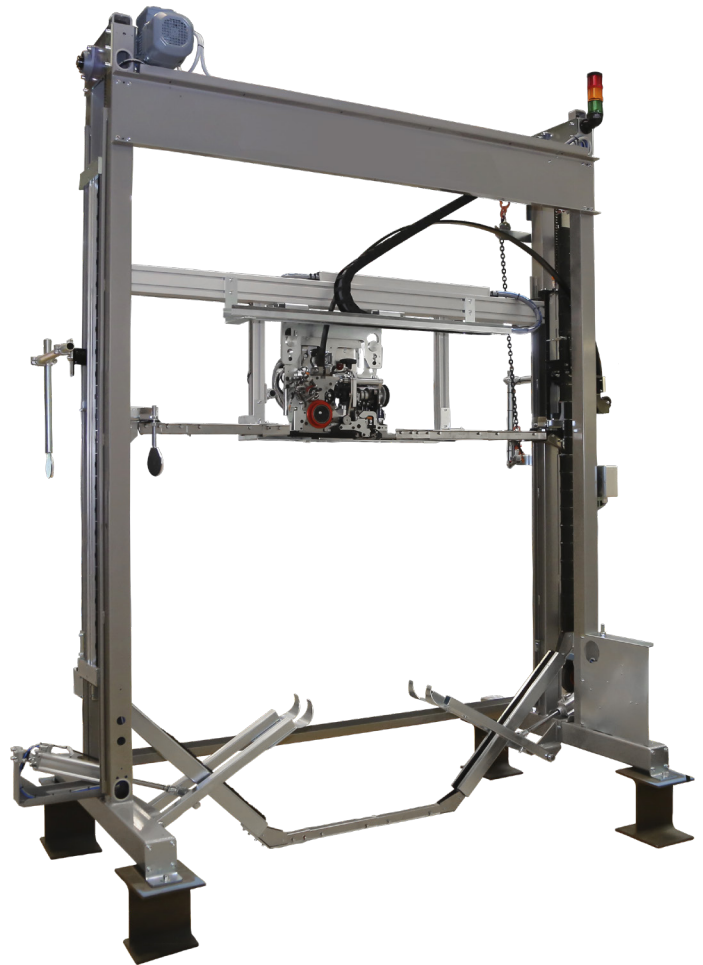
# TSM-3000 R

## Automatic strapping machine for paper rolls

### TSM Machine / Features and Benefits

The modular design allows the range to use various strapping head types to be used with a machine design. This possibility for flexible head integration allows a large field of applications to be covered as well as being able to use flat and embossed plastic strap with friction weld technology.

- **High speed productivity**  
Intelligent dispenser with auto strap feed-up and re-feed from dispenser into sealer for medium and light duty heads.
- **Higher flexibility**  
Low height of bayonet and adjustable speed for customisation and higher throughputs
- **Higher performance**  
Floating head carriage for consistent and high retained strap tension on the product.
- **Reduced operator training needs**  
7" HMI operator touch screen for intuitive operation and simplified trouble shooting.



### Flexible production options



Pneumatically operated strap guide arms for precise positioning of the strap on the paper roll

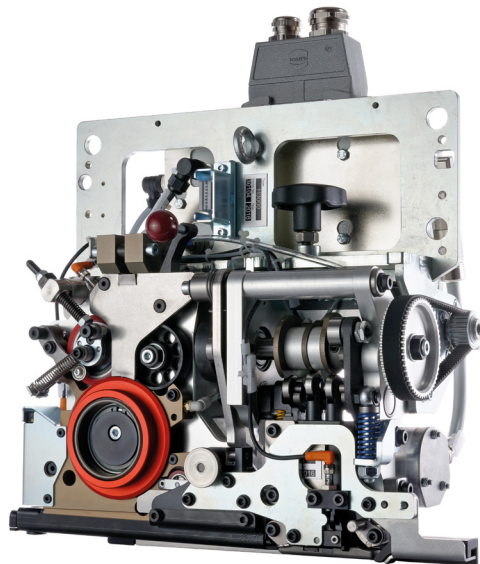
### Intuitive HMI display panel



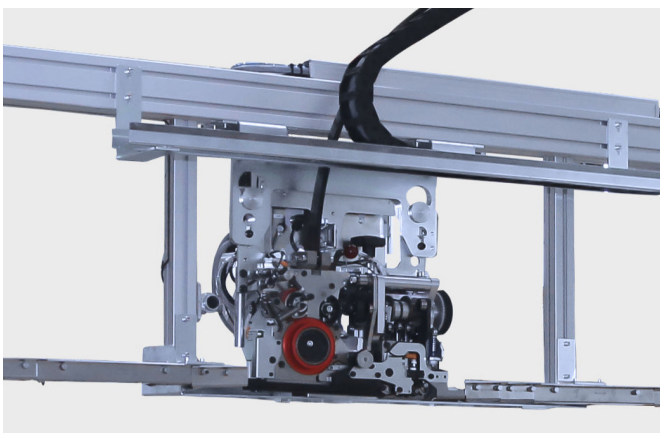
An icon driven control panel that provides step by step prompts for easy and intuitive set up, with minimal language used, for simple control of all functions from a single panel.

## Strapping Head / Features and Benefits

- High performance**  
 Head carriage located on top of load equipped with model H3000 strapping head for high applied and retained strap tension on the load.
- High seal efficiency**  
 Friction weld technology, immediately available, no pre-heating time.
- Increased durability**  
 Durable and robust design and components for highest availability.
- Reduce Downtime**  
 Strapping head design can be serviced conveniently and quickly.



### Improved head carriage



Fast variable speed drive motor with three-fold safety level on lifting chains. Lightweight space-frame model for high speed productivity. Optional heavy duty compression platen and top edge-protection applicator available.

### Accumulating strap dispenser



Standard dispenser for medium and heavy duty applications. Jumbo dispenser station option for maximum machine uptime.

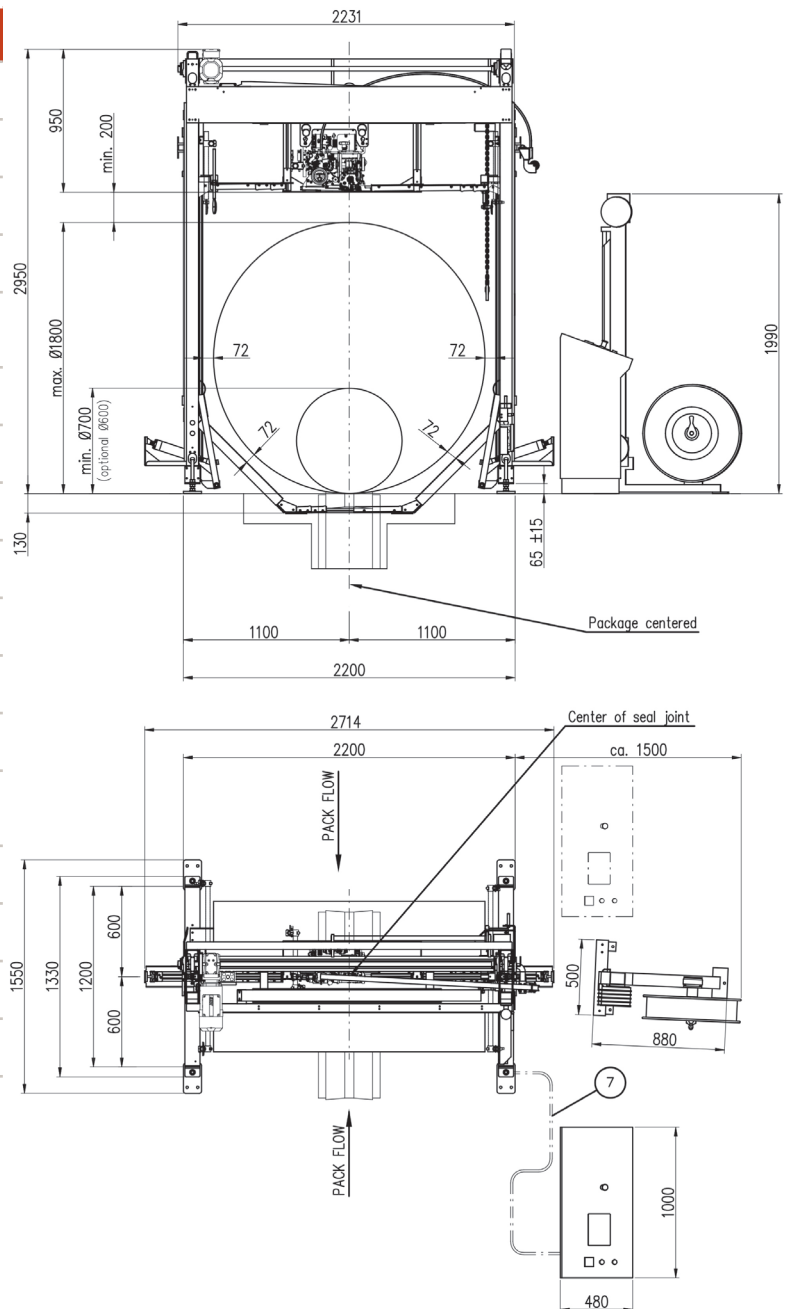
# TSM-3000 R

## Automatic strapping machine



### Technical Specifications and Dimensions

Carriage Speed	160mm/second
Strap Size & Type	12mm - 16mm PET
Strap Tension (N)	200 - 3000
Sealing Method	Friction Weld
Conveying Height	Floor level (0mm) Other heights on request
Chute Type	Telescopic w/ strap guide arms
Electric Supply	400V 3Ph 50Hz
Consumption (kVA)	2 - 3
Control Voltage	24V DC
Ambient Temperature	0-40° C
Pneumatic Requirement	5-6 bar (strap guide arms)
Air Consumption	7 NI / cycle
Cycle Time	Aproximately 12 seconds (1800mm roll diameter)
Machine Weight (kg)	600
Strap Coil	406mm (16") Core
Operator Console	Free standing
Package (mm) Diameter	700-1800 Roll



### Standard Features

- Lightweight design frame
- Aluminum carriage construction
- Easily replaceable strapping head
- Wear-free chain drive
- Telescopic strap chute with flap opener
- Free standing operator station
- Siemens S7 PLC controlled
- Free standing strap dispenser
- Automatic strap end detection
- Pneumatic strap guide arms

### Available Options

- Strap end pre-warning
- Air conditioning unit
- Large roll capacity (600-2100mm) Diameter