

HSM-3000



Automatic horizontal strapping machine

Optimize Performance

Fully electric with brushless drives for maximum productivity and performance

Enhance Flexibility

Modular design allows use of various strapping head types

Maximize Productivity

High performance strap feed of up to 6.7m/sec improving productivity.

Low Cost Ownership

Robust machine design with low maintenance to minimize costs

HSM-3000

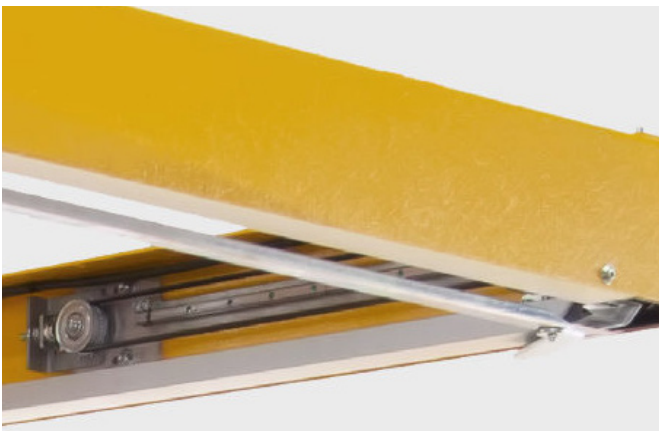
Automatic horizontal strapping machine

HSM Machine / Features and Benefits

- **High reliability and flexibility**
Durable 24/7 operation. Low height of bayonet and adjustable speed
- **Easy to service and low ownership cost**
Few wearing parts, easily exchangeable. Direct brushless drives for head carriage, and bayonet for less service needs and longer operating life.
- **Remote data support**
Diagnostic access via network (optional on request) easy service.
- **Reduced operator training needs**
7" HMI operator touch screen for intuitive operation and simplified trouble shooting.



Flexible production options



Electrical driven strap guide system for exact strap placement positioning.

Intuitive HMI display panel



An icon driven control panel that provides step by step prompts for easy set up.

H-3000 Head / Features and Benefits

- **High performance**

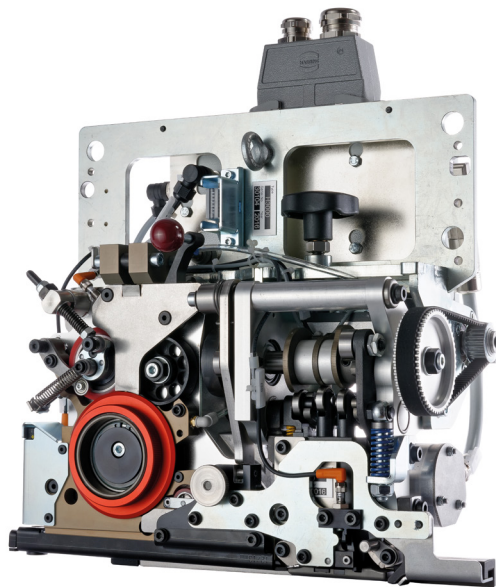
Indexing head carriage on side of load equipped with the H-3000 strapping head for high applied and retained strap tension on the load.

- **High seal efficiency**

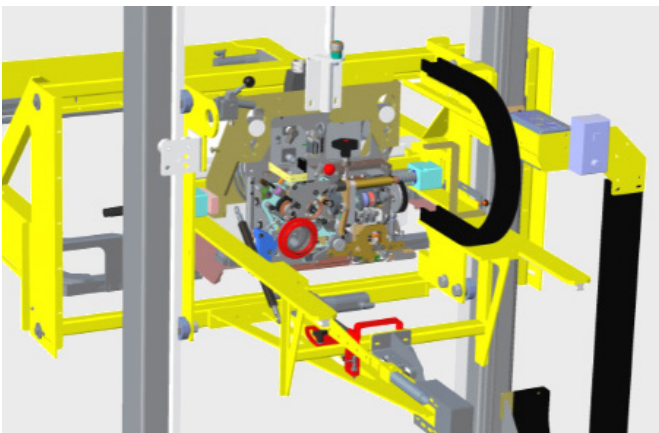
Friction weld technology, immediately available, no pre-heating time.

- **Increase productivity**

The H-3000 Strapping Head ensures perfect product protection with it's high strap tension reaching up to 3,000N. Furthermore the H-3000 features high performance strap feed of up to 6.7m/sec to vastly improve productivity.



Improved head carriage



The easily accessible carriage swivels 90° for accessibility to the strapping head for service and maintenance.

Accumulating strap dispenser



Standard dispenser for medium and heavy duty applications. Jumbo dispenser station option for maximum machine uptime.

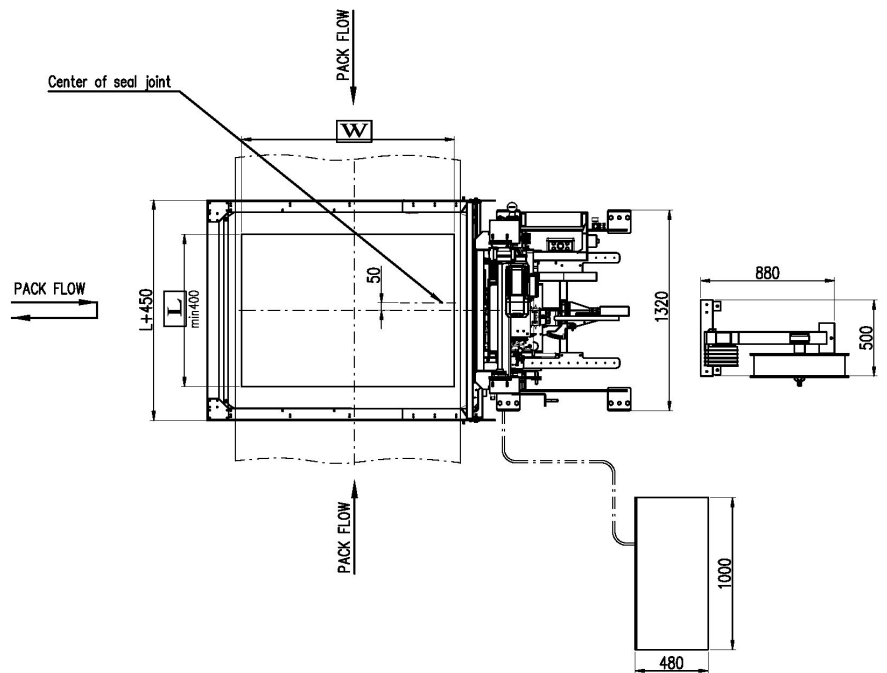
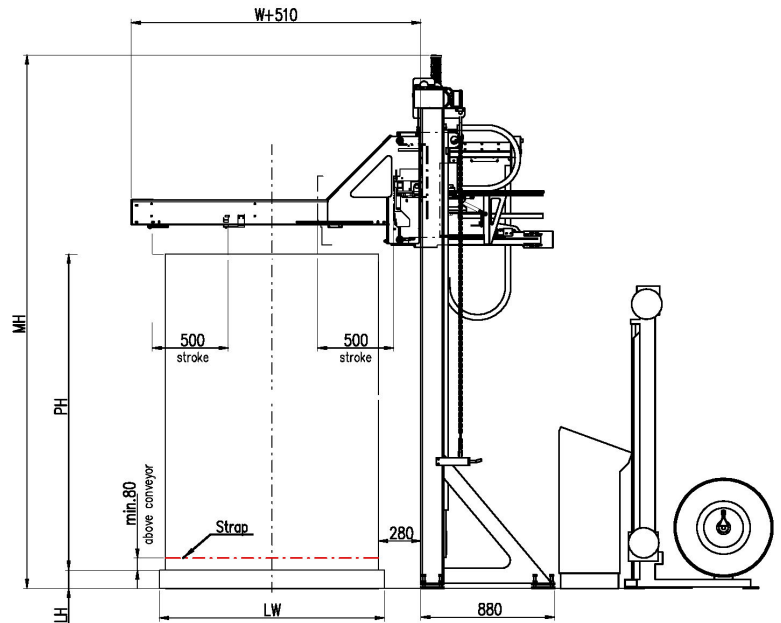
HSM-3000

Horizontal strapping machine



Key Technical Specifications

| | |
|------------------------------------|--|
| Strapping Head | H3000 |
| Head Stroke (mm) | 500 (150mm/sec) |
| Carriage Speed, Vertical | 300mm/sec |
| Strap Size (width) | 9mm to 16mm |
| Strap Types | Polypropylene and Polyester |
| Strap Tension (N) | 200 - 3000 |
| Sealing Method | Friction weld |
| Strap Chute Type | Closed design w/ flaps |
| Electrical Supply | 400V 3Ph 50Hz |
| Consumption (kVA) | 2-3 |
| Control Voltage | 24V DC |
| Throughput | Up to 70 loads / hour |
| Machine Weight (kg) | 650-900 |
| Minimum Strap Height | 80mm above conveyor 250mm above floor |
| Maximum Strap Height | 3650mm above floor |
| Strap Coil | 406mm (16") Core |
| Operator Console | Free standing |
| Chute Sizes (mm) Width x Length | 800 x 1200 |
| | 1000 x 1200 |
| | 1200 x 1000 |
| | 1400 x 1400 |



Standard Features

- Machine frame column design
- Low wear chain drive
- Strapping head floating design
- Aluminum strap chute
- Automatic strap threading
- Free standing operator station
- Siemens S7 PLC controlled
- Teach function (up to 25 strap programs)
- Strap end pre-warning

Available Options

- Automatic strap end detection
- Upgrade to 99 Teach programs/positions
- Top edge package trigger photosensor