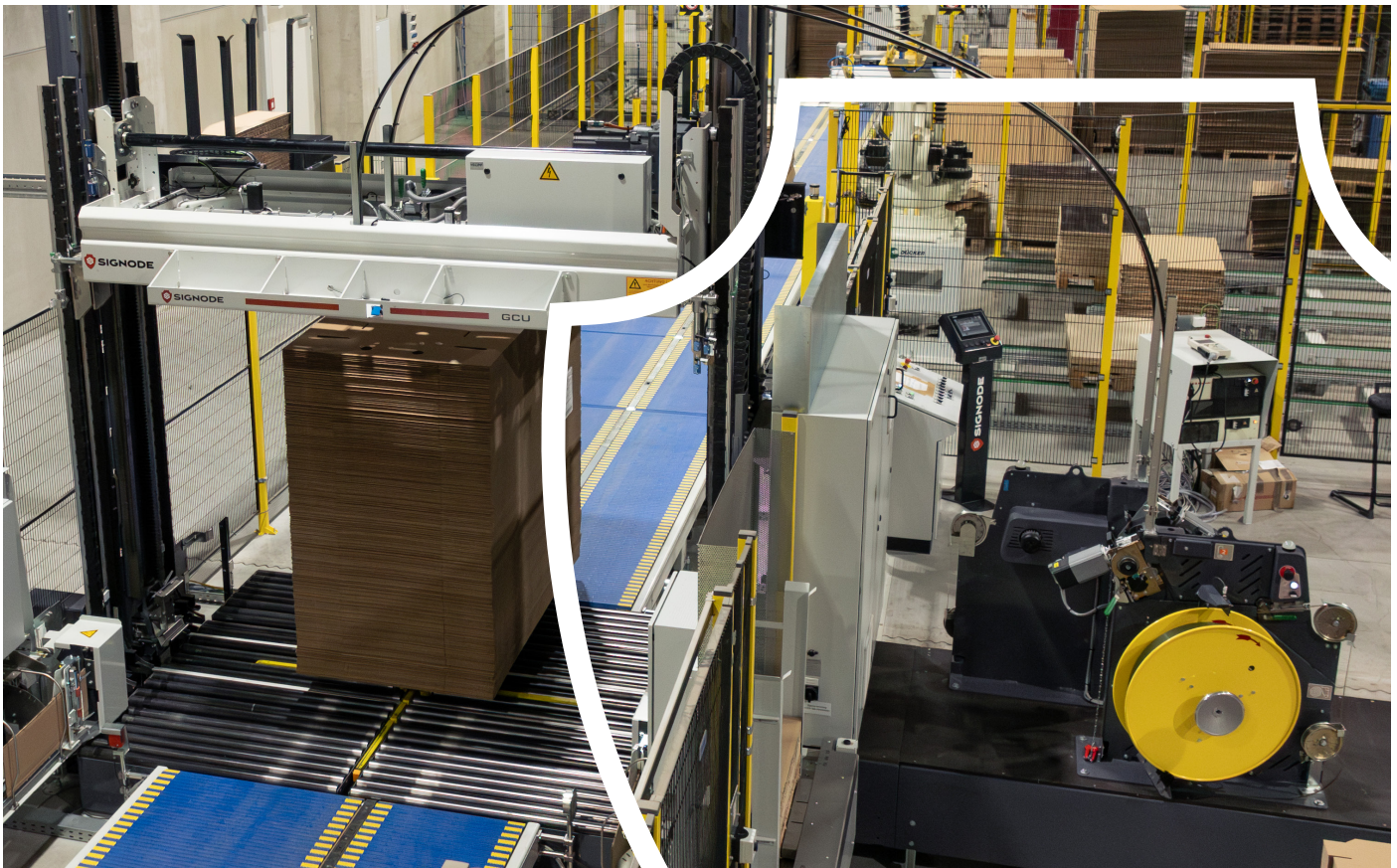


GCU 2600



Corrugated unitizing strapping machine

Enhance Flexibility

Two modular, quick-change strapping heads allow for numerous strap placement options

Optimize Performance

Load compression and variable head tension for optimal load integrity

Maximize Throughput

Capacity of up to 220 loads per hour meeting today's production demands

Easy Operation

Up to 100 strapping programs can be stored and accessed via the operator Unified Panel display



GCU 2600

Corrugated unitizing strapping machine

The GCU 2600 compression strapper unitizer brings customers higher processing speeds and top efficiency levels at a low cost of ownership. Equipped with either 1 or 2 strapping heads combined with up to 4 strapping chutes, the machine can be configured for almost all production scenarios. Additional performance options also available.

Features and Benefits

■ Higher Operating Speeds

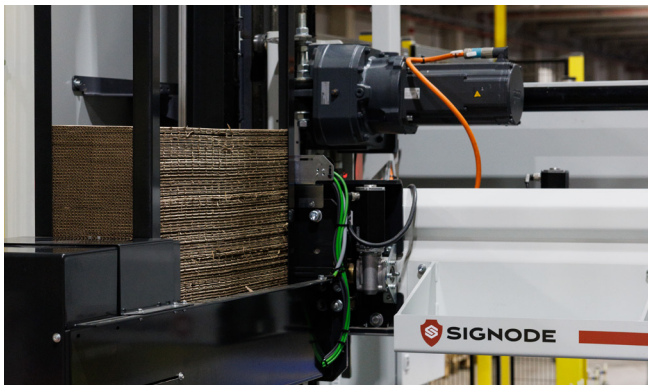
The standard configuration delivers up to 150 pallets and optionally up to 220 pallets per hour easily meeting today's production demands.

■ More Uptime Through Remote Support

Remote equipment analysis (optional) is a key feature in quickly establishing the machine status. A Signode team of skilled engineers provide remote support to put the equipment back in production again.

■ Low Energy Consumption

The GCU 2600 machines are equipped with energy efficient drives and motors resulting in a small CO2 footprint. Servo-controllers have their own built-in energy savings modes.



■ Low Cost of Ownership

The GCU 2600 offers low cost through durable parts and energy efficient components. The Unified Panel Service Module alerts for on time service requirements.

■ Ease of Operation

A large interactive Unified Panel guides the operator through the setup and operation of the equipment. Large symbols allow for an intuitive and non-lingual operation. Up to 100 individual strapping programs can be called up via the Unified Panel display. Format changes become a matter of seconds and do not require any manual adjustment.



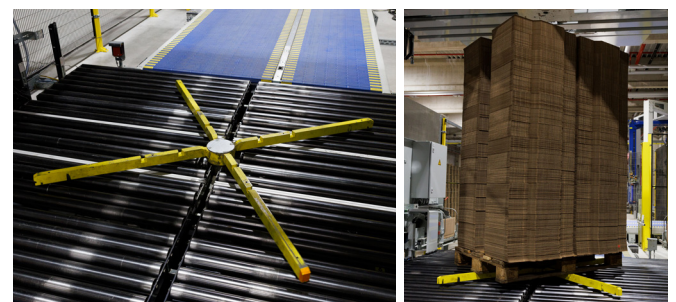
■ High Pack Stability with Accurate Dimensions

A variable second compression rate for cross-strapping mode up to 2,500 kg leads to accurate pack dimensions. This is a precondition for safer and optimum transport conditions. Repeatable height compression levels result in better utilisation of storage systems and truck load volumes.



■ Accurate Package Handling

Pallet loads of up to 1,500kg can be quickly turned by either Turn-Cross or Turn-Table inside the press. Minimum time is needed even for more complex strapping patterns.



■ Multiple Strapping Patterns for a Quality Package

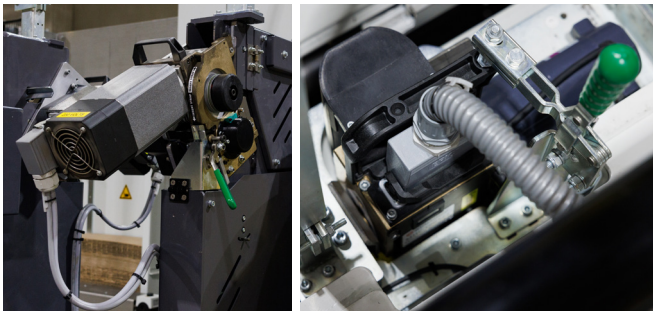
Through the combination of two indexing Bayonet units and up to four strap chute systems multiple strap patterns can be applied allowing a wide range of different products to be packed.





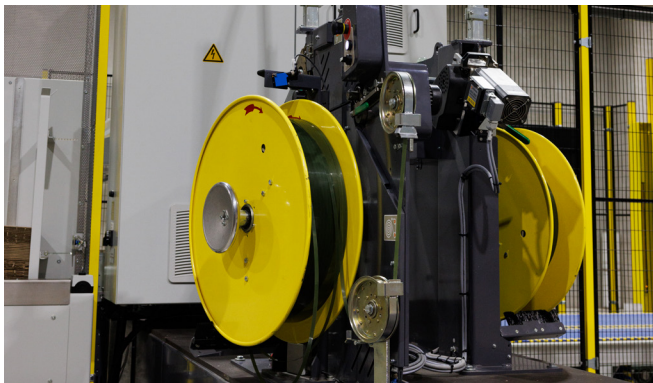
■ Modular Feeders and Sealers Ease Maintenance

More uptime and higher efficiency is reached through the use of MHC modular strapping heads allowing for a quick change action during production and off-line repair and maintenance. Both feeder and sealer light-weight modules can be quickly exchanged leading to higher production levels for fault analysis or offline maintenance.



■ Automatic Strap Loading and Refeed

Changing a coil of strapping becomes a simple & easy task with the support of automatic strap feeding right into the strapping module. The installation is quickly back in operation again.



■ Top and Bottom Edge Protection Applicators

Top and Bottom Edge Protection applicator technology results in optimum package presentation and appearance supporting customer acceptance. Both edge protection applicators are easily accessible for refilling purposes. Edge protection provides additional load integrity and protection. By preventing damage, improving load stability, it enhances the overall efficiency and reliability of the unitizing process.



Technical Specifications

Speed (standard)	Up to 150 pallets / hour *
Speed (optional)	Up to 220 pallets / hour *
Conveyor	Variable speed up to 22m / min
Load Compression	Adjustable up to 2500 kg
Strapping	Tenax® PET Polyester flat 9 to 12.5 mm Tenax® 1616, 9 x 0.50 mm Tenax® 1617, 9 x 0.57 mm
MHC Strap Tension	80 to 900 N
Power	400 - 480 V, 50 Hz, 3 phase, 10 kVA
Control Voltage	24 V, DC
Controlling Unit	Siemens S7-1500 F-CPU
BEA Capacity	Aproximatley 120 pieces per cassette
TEA Capacity	Aproximately 150 pieces per cassette
Sheet Dimensions	Width: 250 - 300 mm Length: 750 - 950 mm
Machine Weight	5,000 kg approximatley

* Depending on load size, conveyor speed, compression level, and strap pattern.

Optional Equipment

- Up to four strap chutes with alternating bayonet and sealer carriages
- Up to four underfeed fixed strap chutes fully integrated in the press conveyor
- Press conveyor with or without pallet Turn-Cross or Turn-Table
- Entry and exit conveyors
- Entry conveyor with Pallet Centering device
- Bottom Edge Applicator (BEA)
- Top Edge Applicator (TEA)
- Precise positioning under press platen
- Up to 100 strapping programs
- Compatibility with various Muting systems
- SigCure extended press platen locking device
- Spare MHC Feeding/Take-Up & Sealing Module
- Custom paint colors (RAL matching)
- Automated verification of the strap attached to package
- Symetric press platen extension
- Pallet block detection

GCU 2600

Corrugated unitizing strapping machine



Machine Dimensions

Configuration shown with optional Top Edge Applicator (TEA) and Bottom Edge Applicator (BEA)

Config	A Max Height	B Load Width	C Conveyor	H Load Height
Standard	2800	Min. 500 Max. 2600	2640	Min. 500
With BEA		Min. 900 Max. 2500		Max. 2650 (with 305mm conveyor height)
With Movable TEA		Min. 500 Max. 2600		Max. 2600 (with 350mm conveyor height)
With Fixed TEA		Min. 500 Max. 2000		

Note: All dimensions shown in millimeters (mm)

